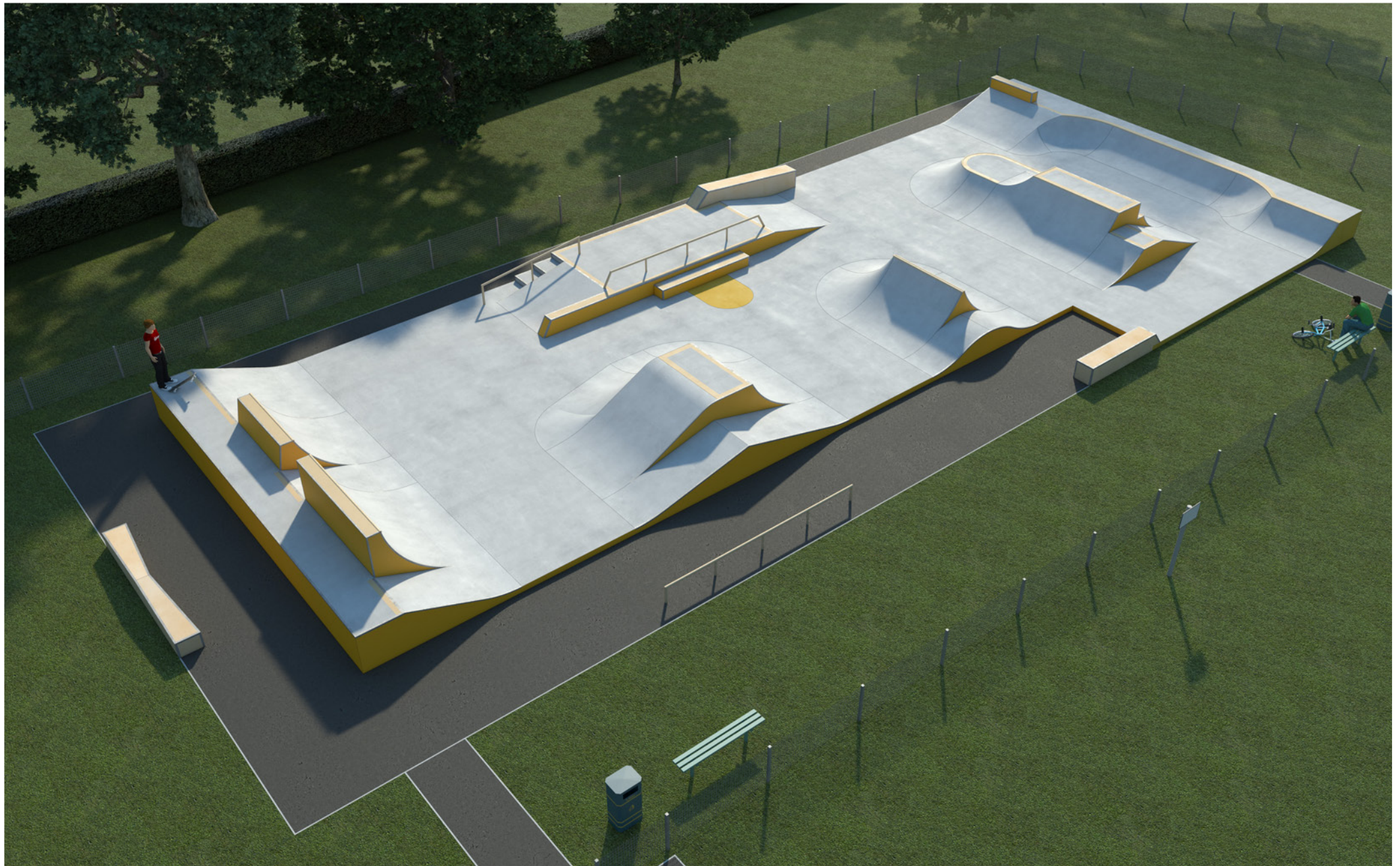


## Brook End Skatepark

Potton, Bedfordshire - Tender Design - Visualisation 1






## Brook End Skatepark

Potton, Bedfordshire - Tender Design - Visualisation 2



## Features

- 
- |   |   |
|---|---|
| 1 Apex Block – 0.38m-0.5m high, 0.5m wide, 4m long      | 18 Descending Rail  |
| 2 Flat Bank – 0.8m high, 1.2m wide                      | 19 3 Stair-Set – 0.45m high, 0.64m wide                     |
| 3 1/4 Pipe – 1.8m high, 3m wide                         | 20 Hubba Ledge with Wallie End – 0.5m wide                  |
| 4 Flat Bank / Channel Gap – 0.8m high, 1.2m wide        | 21 Flat Bank – 0.45m high, 2.44m wide                       |
| 5 1/4 Pipe – 1.4m high, 2.2m wide                       | 22 Grind Block with Wallie End – 0.35m-0.5m high, 0.5m wide |
| 6 Flat Bank – 0.8m high, 2.7m wide                      | 23 Mini-Jump Box – 0.7m high, 1.2m wide                     |
| 7 Flat Rail – 0.4m high, 5m long                        | 24 1/4 Pipe – 1.2m high, 3m wide                            |
| 8 "Wedge" Flat Banks – 0.7m high, 1.2m wide             | 25 Mini-1/4 Pipe – 0.5m high, 1m wide                       |
| 9 Jump Box – 1.2m high, 2.2m wide                       | 26 Volcano Transfer – 0.7m high                             |
| 10 1/4 Pipe Blend                                       | 27 Sub-Box – 0.5m high, 3m wide                             |
| 11 Pump Bump / Roller – 0.54m high, 1m wide             | 28 1/4 Pipe – 0.7m high, 5m wide                            |
| 12 Spine – 1.2m high, 2.36m wide                        | 29 1/4 Pipe – 0.7m high, 2m wide                            |
| 13 Coloured Concrete Gap – 1.55m wide, 1.4m long        | 30 1/4 Pipe Hip / Blend – 0.7m high                         |
| 14 Grind Block – 0.3m high, 3m long                     | 31 1/4 Pipe – 0.7m high, 4.5m wide                          |
| 15 Grind Ledge with Wallie End – 0.45m high, 7.54m long | 32 Mini-Ramp Section  |
| 16 Flat Rail with Wallie Ends – 0.4m high, 5.1m long    | 33 Flat Bank – 0.7m high, 2.8m wide                         |
| 17 Flat Bank – 0.45m high, 2m wide                      | 34 Grind Block – 0.35m high, 1.8m wide                      |









Approx. 1:500 @A2

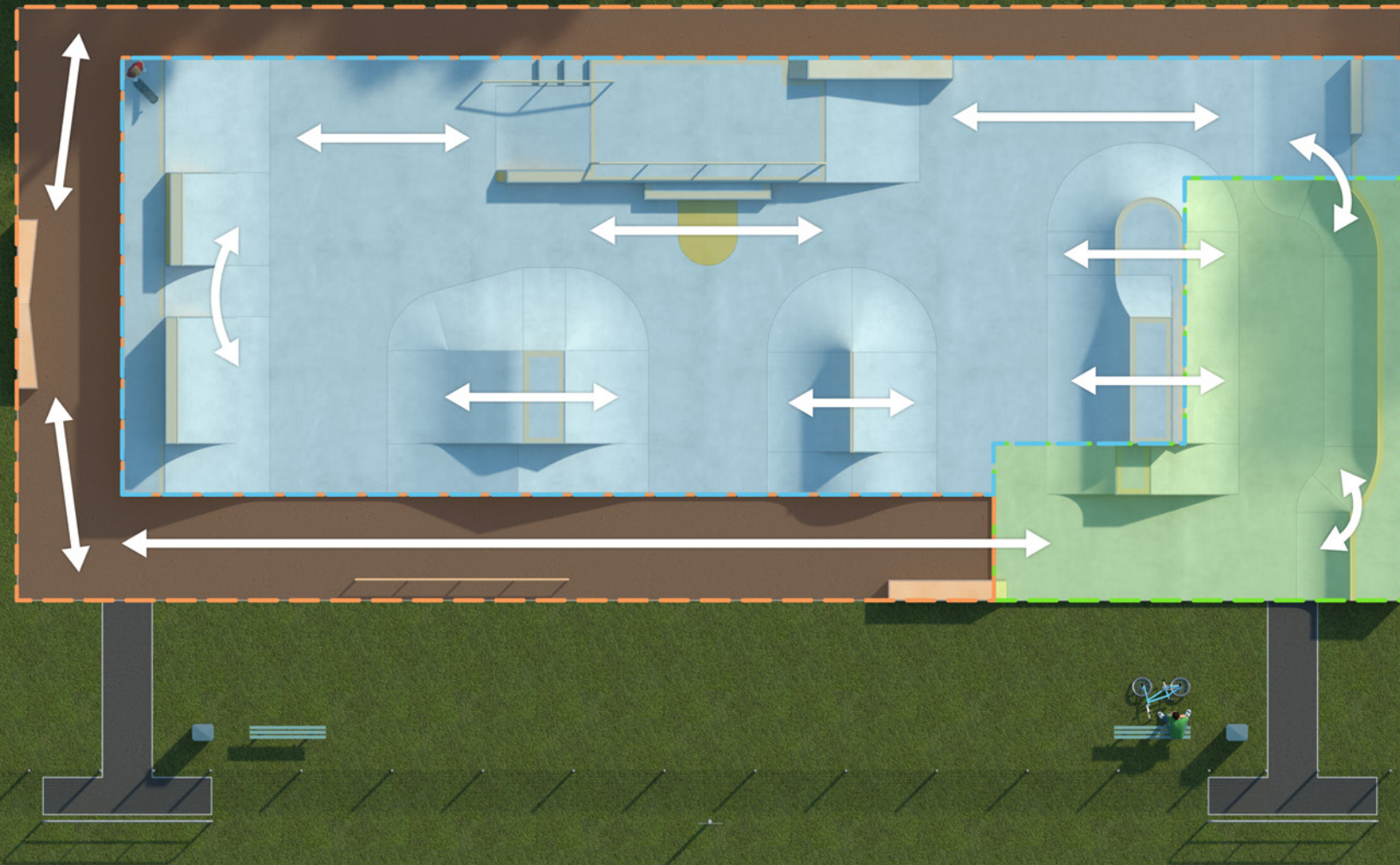
## Brook End Skatepark

Potton, Bedfordshire - Tender Design - Aerial view



## Key

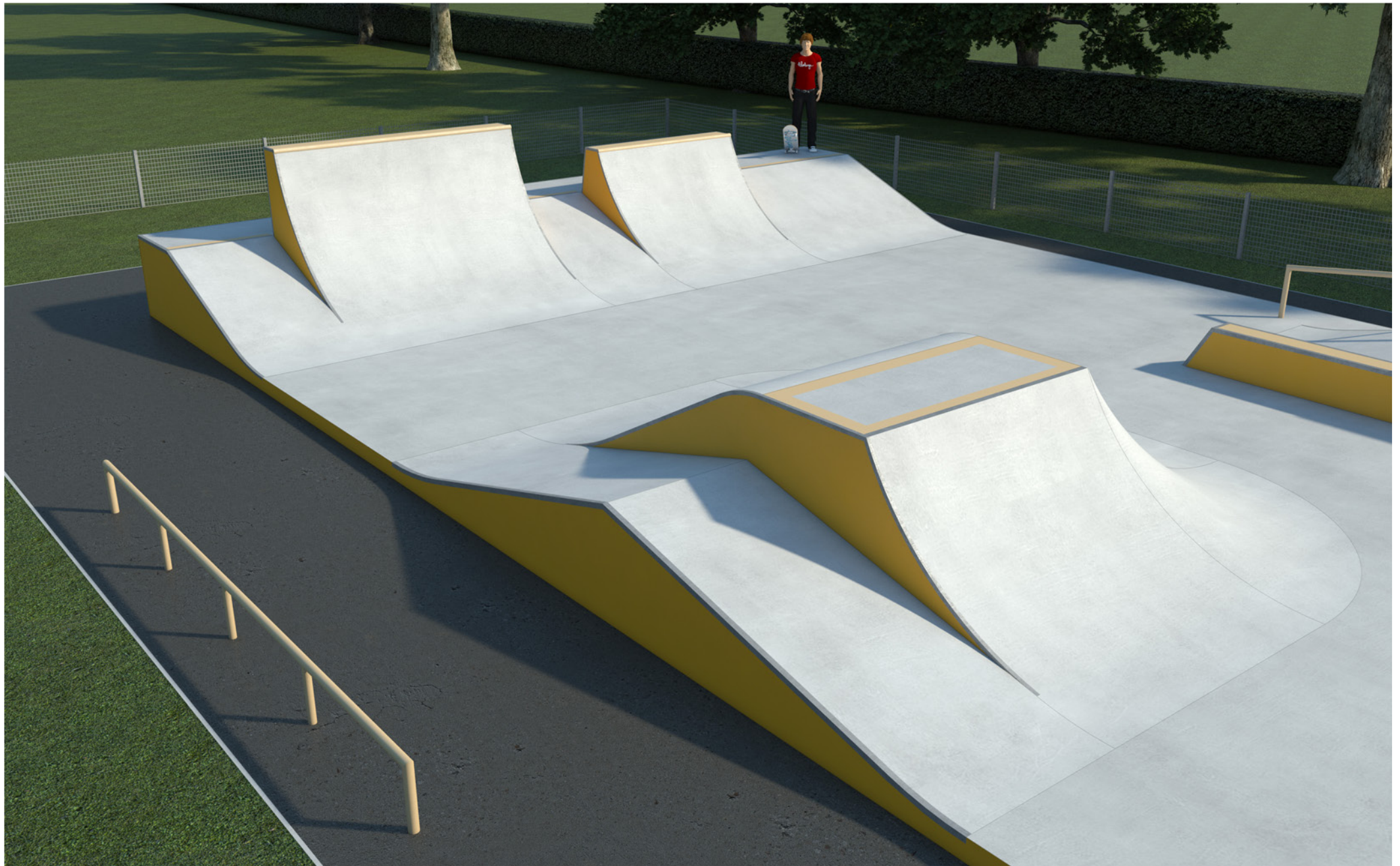
 Beginner / Scooter Area    Street / Park Area    Rhythm / Park Area    Flow Line



## Brook End Skatepark

Potton, Bedfordshire - Tender Design - Areas and Flow Lines

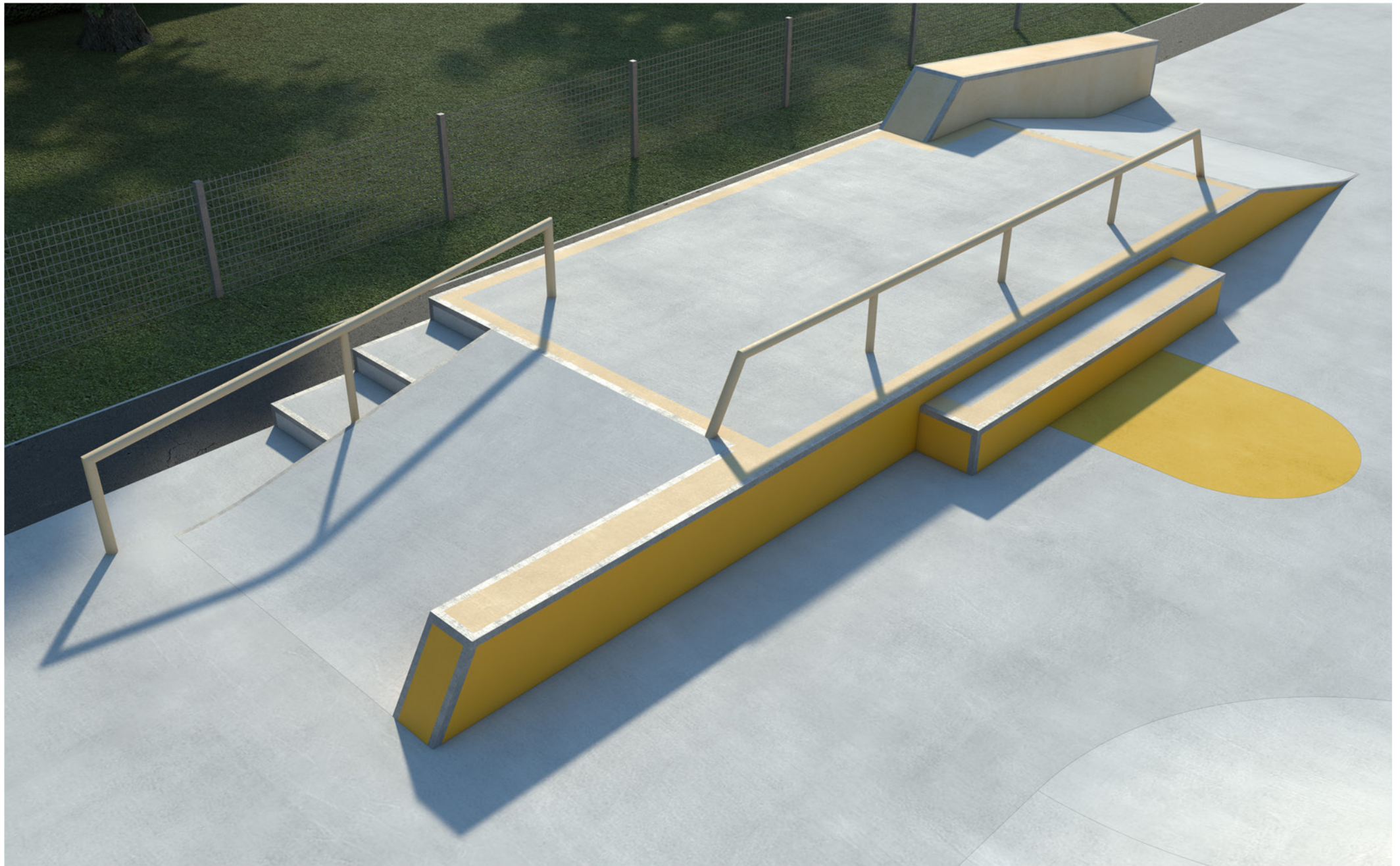




## Brook End Skatepark

Potton, Bedfordshire - Tender Design - Visualisation 3

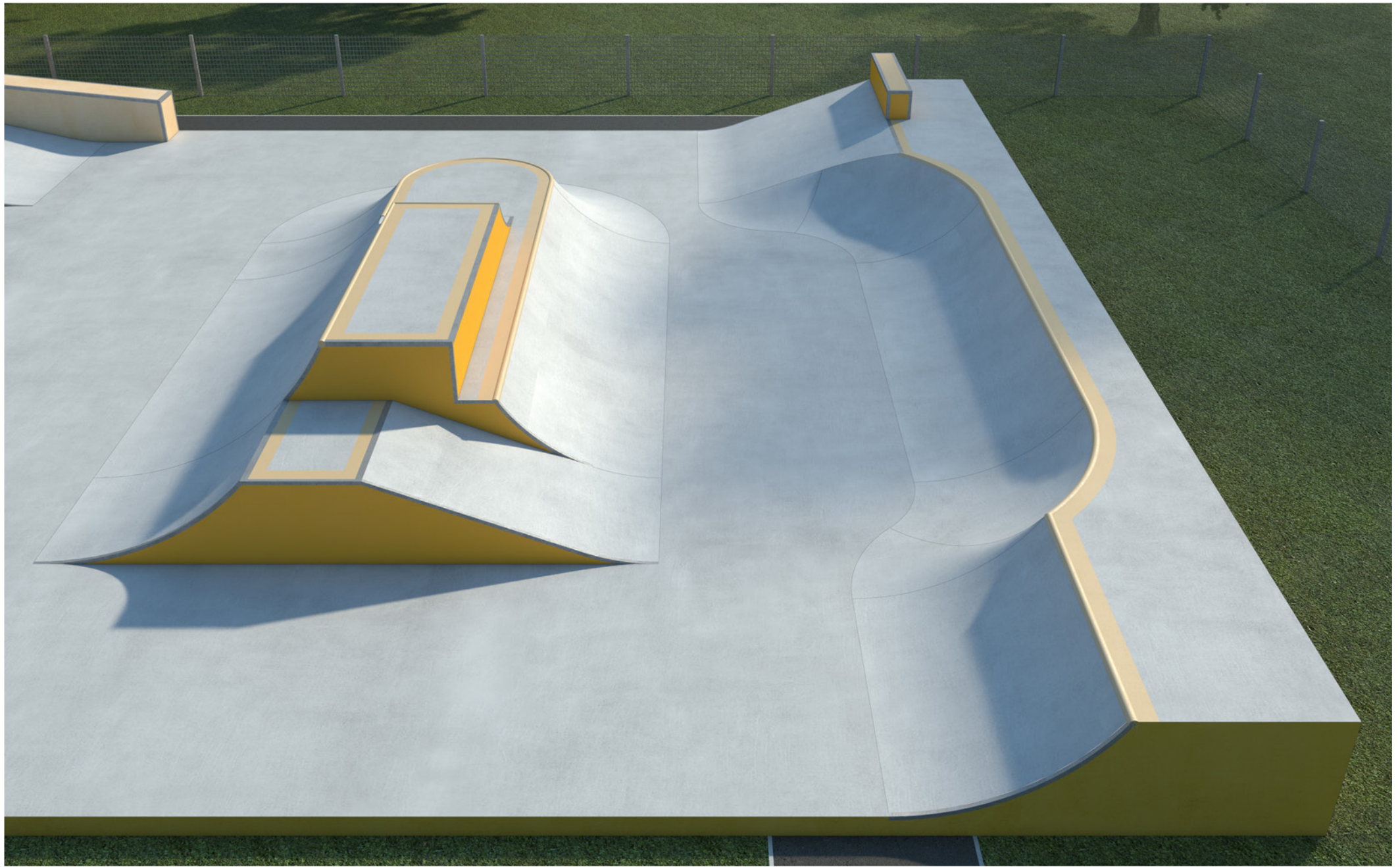




## Brook End Skatepark

Potton, Bedfordshire - Tender Design - Visualisation 4

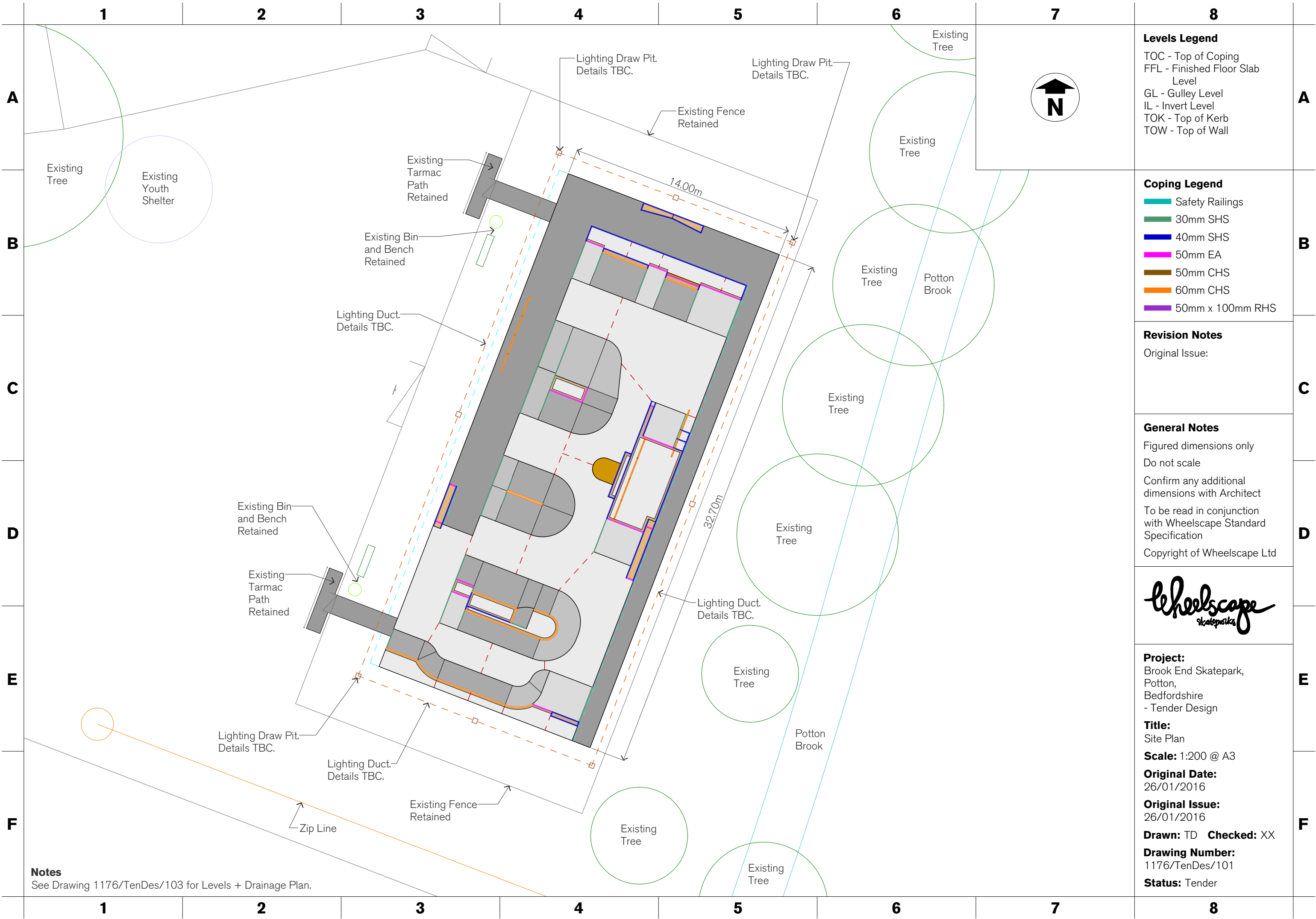




## Brook End Skatepark

Potton, Bedfordshire - Tender Design - Visualisation 5





**Notes**  
See Drawing 1176/TenDes/103 for Levels + Drainage Plan.

**Levels Legend**  
TOC - Top of Coping  
FFL - Finished Floor Slab Level  
GL - Gully Level  
IL - Invert Level  
TOK - Top of Kerb  
TOW - Top of Wall

**Coping Legend**  
Safety Railings  
30mm SHS  
40mm SHS  
50mm EA  
50mm CHS  
60mm CHS  
50mm x 100mm RHS

**Revision Notes**  
Original Issue:

**General Notes**  
Figured dimensions only  
Do not scale  
Confirm any additional dimensions with Architect  
To be read in conjunction with Wheelscape Standard Specification  
Copyright of Wheelscape Ltd



**Project:**  
Brook End Skatepark,  
Potton,  
Bedfordshire  
- Tender Design

**Title:**  
Site Plan

**Scale:** 1:200 @ A3

**Original Date:**  
26/01/2016

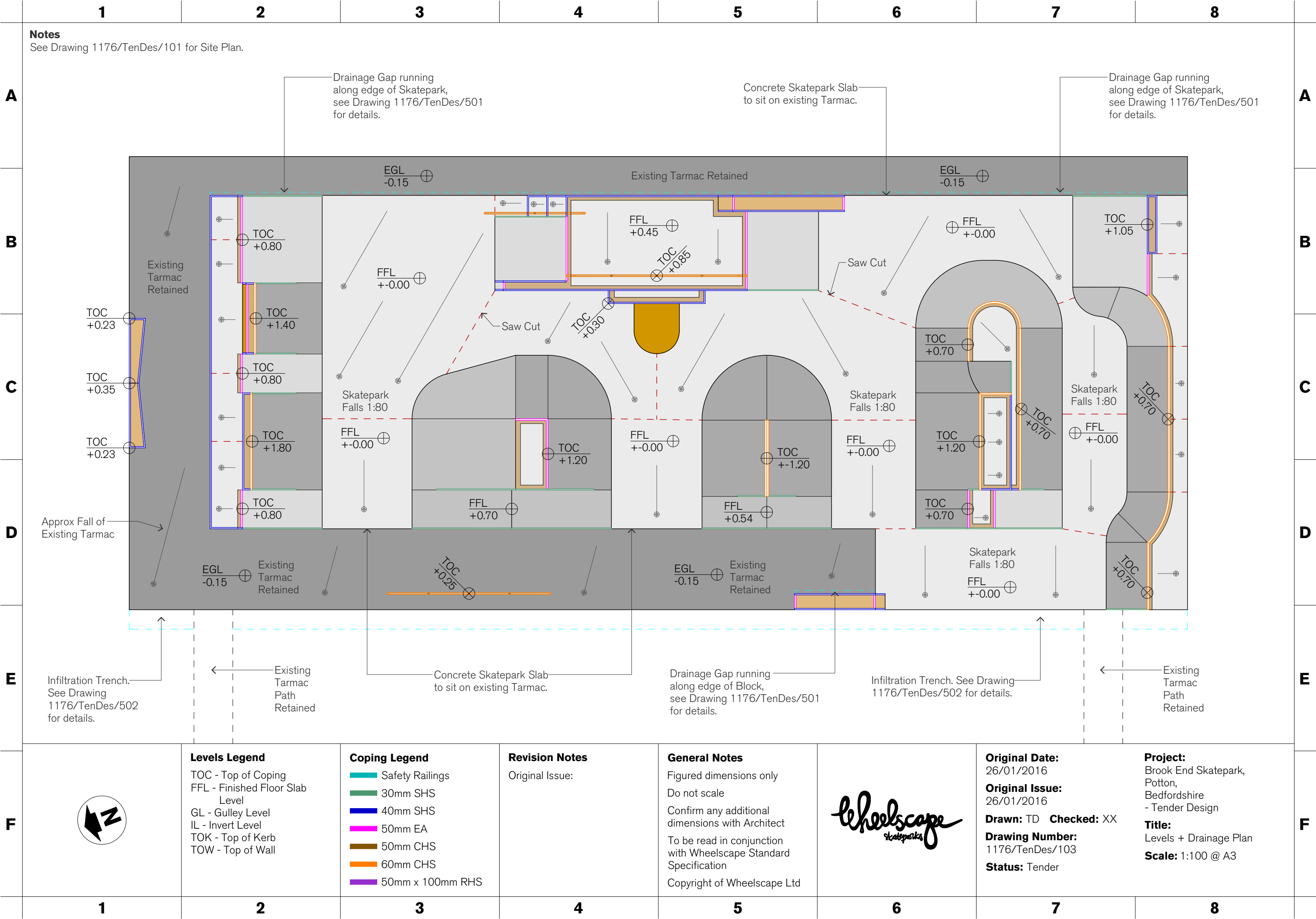
**Original Issue:**  
26/01/2016

**Drawn:** TD **Checked:** XX

**Drawing Number:**  
1176/TenDes/101

**Status:** Tender







		1	2	3	4	5	6	7	8		
A  <											



