



POTTON
TOWN COUNCIL

News

Spring/Summer Edition 2018

www.pottontowncouncil.co.uk



Potton Town Council Chairman & Vice Chairman



At the town council meeting on 1st May 2018 the councillors of Potton Town Council re-elected Councillor Angus Macdonald as Chairman and Councillor Denis Ellison as Vice Chairman.

Potton Neighbourhood Plan

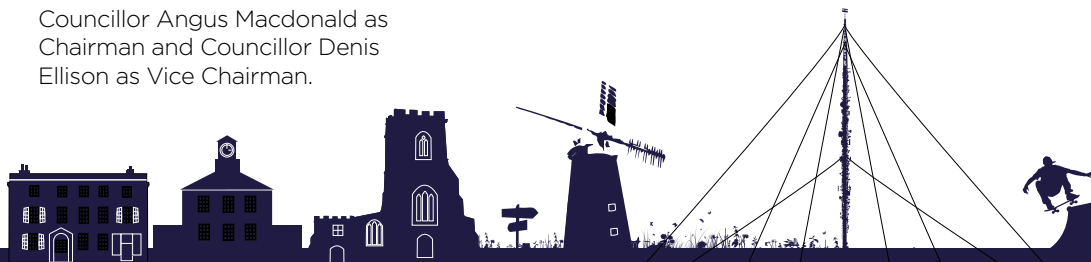
The draft is now available.

Your 4-page pullout, which tells you how to comment is on the centre pages of this newsletter!



Job vacancies

Come and work for the Town Council. Details on page 5.



Town Council Information and Office Opening Times

For enquiries regarding the following: Cemetery, Allotments, Henry Smith Playground, Mill Lane Playground, Recreation Fields, Public Conveniences, Brook End Car Park, Mill Lane Pavilion and Community Centre. The Town Council office is open for drop-in visitors as follows:

Monday	9.30am – 12.30pm
Tuesday	9.30am – 12.30pm
Wednesday	Closed
Thursday	9.30am – 12.30pm
Friday	9.30am – 12.30pm

If you want to be sure of seeing a specific member of the team please ring ahead to make an appointment.

Tel: 01767 260086

E: pottoncouncil@btconnect.com

W: www.pottontowncouncil.co.uk

Councillor Contact details

Chairman Angus Macdonald	262006
Vice Chairman Denis Ellison	261925
Adrian Bell	260641
Geoff Emery	261710
Andrew Gibb	260067
Richard Harris	262596
John Hobbs	260710
Les Ivall	261559
Jonathan Lean	262404
Alan Leggatt	260001
John Lewis	260726
Jonathan Price Williams	07981 350359
Chris Temple	262535
Rex Whitfield	262246
Adam Zerny	261319

Town Council Meetings

Held in the Main Hall of the Community Centre starting at 7pm.

Tuesday 5th June

Tuesday 3rd July

Councillor Surgeries

Held in the library starting at 10am until 12 noon.

Saturday 16th June	Cllr Gibb and Vice Chairman Cllr Ellison
Saturday 14th July	Cllr Hobbs and Cllr Emery

Get your local news into the Town Council Newsletter

The next edition is planned for delivery at the end of July. If you would like information to be included, please email: pottoncouncil@btconnect.com by midday on Monday 18 June. Please be aware that the Town Council reserves the right not to include articles and photos. Please recycle this newsletter when you've finished reading it by putting it in your green recycling bin.

This publication has been compiled and published by Potton Town Council who are the owners of the copyright. No reproduction is permitted without the express permission of the Council. Every effort has been made to ensure the accuracy of the various entries within this publication. In no circumstances can Potton Town Council accept any liability for any loss or damage of any kind which may arise as a result from any error in, or omission of, any entry, artwork or telephone number. The editorial content is not necessarily the views of the Council.



Chairman's message

Hello and welcome to the Spring/Summer edition of the Town Council quarterly newsletter.

The Beast from the East has been banished and we are now (at the time of writing!) basking in glorious spring sunshine, breaking records over 70 years old. However, the Beast did have an impact on our recent Spring Four Seasons Market and I would like to thank all our hardy souls that braved the cold and supported our local traders and market visitors. Hopefully, the summer market will take place in more seasonal conditions!



Litter Pick

Early in March, a number of volunteers turned out for our spring litter pick.



Collected Litter

I'm pleased to say it was the best supported event yet and whilst on one hand it's great to see so many bags to be disposed of, highlighting the hard work of our volunteers, it's extremely disappointing that this amount of litter finds its way onto our streets and byways. There are still people out there that think it is acceptable to drop their litter for others to deal with, including those just driving through or around the town. We try to provide enough bins in and around the town, however if there are any areas that you feel are neglected then please get in touch.

In our last letter I advised you that Potton Town Council had asked Bedfordshire Police to provide a visible presence at our monthly council surgeries that we hold in Potton library. ...cont



Four Seasons Market



Saturday 16th June

9am - 1pm



For more information visit
pottontowncouncil.co.uk/four-seasons-market

I'm pleased to say that Bedfordshire Police has taken us up on our offer and that a PC has been in attendance during our February, March and April surgeries. I know it can be frustrating when incidents occur that could benefit from or be addressed by a police presence in town, particularly in these austere times. Whilst that is not always possible for the police to be here when we want them, rather than need them, they have committed to attending our surgery once a month and will make themselves available to all members of the public. If there are any issues you wish to raise or possibly any advice you wish to seek, then please come along and speak to an officer. They will only continue to attend if we make valuable use of their time.

I'll move on to the subject of development and start with some good news. Our Market Town Regeneration requests for various initiatives around the town square will finally start to move forward. Some of our traders will be investing in new shop fronts and livery whilst the town council will hopefully start work on extending the Henry Smith Playing Fields car park. Our planning application for the car park extension was recently approved by Central Bedfordshire Council (CBC) and we will shortly be going out to tender to find a company to do the work.



Henry Smith Playing Fields
Car Park

This extension should hopefully provide much needed parking for those attending appointments at the local surgery as well as supporting our local traders by providing additional parking for shoppers.

Initial plans to double the capacity had to be amended to meet conditions imposed by CBC Planning, however the capacity will still almost double. Upon completion the car park will be re-lined, making it easier to see parking spaces available. We will also be making provision for disabled drivers.

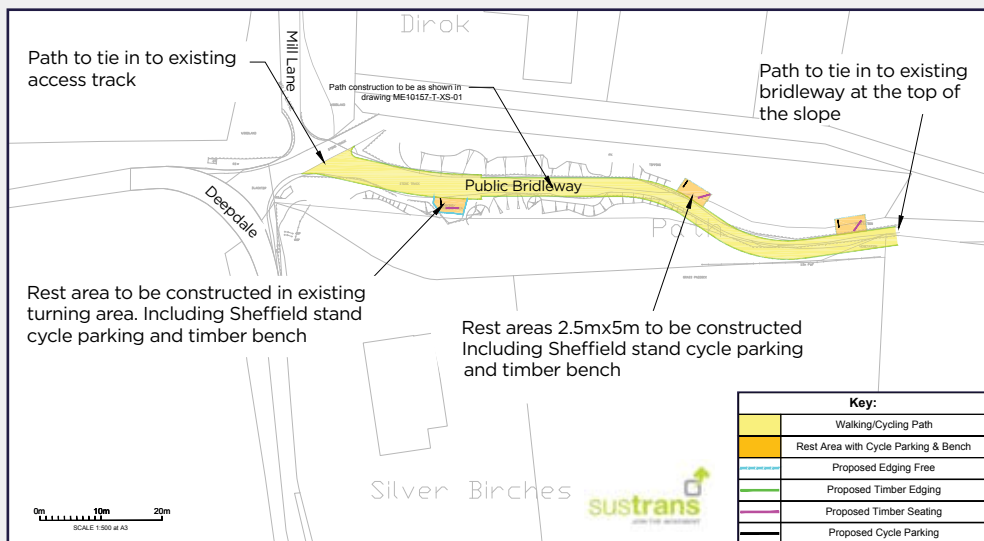
The next development item is our cycleway link between Pottin and Sandy. This project has been underway for a number of years and the persistence of all our stakeholders and supporters has ensured we will soon have a cycle link between Pottin and Sandy via the RSPB. Work on the Sandy-RSPB section was

completed last year when pavements were widened to accommodate cyclists. Work has commenced slightly closer to Pottin this time with the focus shifting to the Deepdale section of the route. Hopefully this will be welcome news for all cyclists, runners, walkers and riders in the area.

Finally, work has started in earnest on Sandy Road on the new Cala Homes development. This will provide a further 90 houses in Pottin by the time all works are completed. However, it is disappointing to see continued applications from speculative developers coming in, despite all the planning approvals recently granted – if all sites that have been granted outline



Map showing the cyclelink development plan for Deepdale section:



planning permission are completed our town will increase by 478 houses, which equates to an increase of just under 21% in the size of the town. The latest application is a further attempt to gain planning for a site off Sutton Road, bordering on houses on Bury Hill. Potton Town Council and CBC has previously objected to an application on this site, a decision that the developer is currently appealing. However, it seems the developer is not content to wait on this appeal and has submitted a fresh application.

I am pleased to finish by confirming that the Town Council has recently approved the draft of our Neighbourhood Plan. Our plan has a couple of further reviews, including a review by CBC, before it will be put out to the town in a referendum so watch this space!

Enjoy the newsletter!
Best Wishes

Angus

Cllr Angus Macdonald

Town Council Vacancies

Caretaker

We are looking to appoint an enthusiastic and reliable Caretaker to carry out caretaking and cleaning activities.

Caretaker / Groundkeeper / Maintenance

We are looking to appoint an enthusiastic and reliable General Assistant to carry out caretaking, maintenance and ground keeping activities.

Both positions are 15 hours per week and overtime for additional hours. (Times to be confirmed) NJC Scale Point 13 currently £9.03 per hour and are an ideal opportunity for responsible people, who has pride in their work, conscientious attitude towards work duties, be able to maintain a high standard of work and would like to work for the local community.

An application pack can be found on our website or by contacting the town council. Please note CV's will not be accepted.

Closing Date: **Tuesday 19th June 2018 at 9am.**



The Potton Hall for All Support Committee

In the four months since Planning Permission was granted for the proposed Potton's Hall for All, the Trustees and Support Committee have been working relentlessly to secure the appropriate local support, together with national and European grants to help take this vital project forward. We are at a critical stage, and in close discussions with Central Bedfordshire Council and Potton Town Council to resolve some outstanding issues. We remain hopeful of a successful outcome, but we will not rest until we are "over the resolution line"!

We are most grateful to the many groups, associations, societies and clubs who have written to us in support of the Hall for All. Please accept our apologies if we have failed to contact any group, but now ask that if you would like to write a letter, preferably on headed notepaper, please send it to David Tall at dandrtall@gmail.com. David can provide you with some background information to any letter's content. These letters will accompany any funding bid we make and play an important part in making a successful bid. Thank you.

Thank you too to the many people who have signed up to select us in the Co-Op's Local Causes Scheme for 2017 - 2018.

Your help is a click away on membership.coop.co.uk/causes/14886.



The scheme for this year ends in October. We have received about £200 so far. EVERY penny matters!

We held our AGM recently and re-elected four Trustees and appointed a new one, Craig Gant. Craig has replaced Katie Foord, who is standing down after four years, during which time she has made a fantastic contribution to our work. We thank Katie, very much, for all she has done. We are delighted that she wishes to remain on the Support Committee.

If, like Katie, you wish to offer your services to the Committee, please contact David Tall at the above e-mail and he would be delighted to explain what we are seeking from our volunteers.

The Hall for All will be just that. Spread the word, please. Thank you.

www.pottonhallforhall.org.uk

Registered Charity - Potton Hall For All 1158751

What do the council tax payers in Biggleswade, Gamlingay, Sandy pay?

For further Town Council Services information visit

www.pottontowncouncil.co.uk

For Council Tax enquiries call Central Bedfordshire Council on **0300 300 8000**

	2018/19 Band D
Biggleswade	£131.92
Gamlingay	£137.64
Sandy	£140.65
Potton	£120.14



Potton

Neighbourhood Plan 2018 - 2035



Planning for the Future

pottonneighbourhoodplan.co.uk

What is a Neighbourhood Plan?

It is a way of enabling us, the community, to help shape our town and guide how housing and infrastructure development takes place, while influencing its type quality and location and making sure that it brings with it local benefit.

So to achieve this goal our Neighbourhood Plan:

- Is based in what YOU the local community told us backed up by our extensive research.
- Aims to make Potton an even better place to live, now and for future generations, covering from 2018 to 2035 with a review at the most every 5 years.

- Provides an opportunity for us all to have a real say over local decision making, to achieve long-standing goals through the planning system and address the challenges and opportunities facing the future vitality of the Parish.

What are we asking you to do?

Before we submit Potton's Neighbourhood Plan to Central Bedfordshire Council for adoption we want to make sure that we have got it right – it is YOUR plan, not ours.

So, please read through the draft plan which is located on our website:

www.pottonneighbourhoodplan.co.uk



Or if you prefer there are paper copies that you can read in the Library and other locations around the Market Square. If you can't find one the Town Clerk will be able to help at the **Potton Town Council Offices, Brook End, Tel: 01767 260086.**

PLEASE let us know what you like / dislike about our Neighbourhood Plan using the simple on-line comment sheet on our website or by using the comment sheet on page 10.

What will we do with your reply?

We will respond to every comment received and publish responses on our website at the end of the consultation process. We will also amend the draft Neighbourhood Plan in the light of the

comments received and then submit the final Plan to Central Bedfordshire Council where it will be assessed by an independent examiner, and any changes that are needed made.

And Finally...

Our Neighbourhood Plan will go to a local referendum where all residents of Potton Parish will be asked to vote on whether or not they want to adopt the Plan a simple Yes or No.

We believe that we have written a Neighbourhood Plan that is in line with your shared Vision. Gaining your vote of approval will enable the Plan to become a mandatory planning document to which all potential developers and CBC must refer.



Local Employment

Transport

Environment

Potton Neighbourhood Plan - consultation comments

Please submit as many comments as required on seperate forms.

Note that comments might be published anonymously in the future.

Please do not use any language that you would not wish to be made public.

E-mail addresses will not be published.

Alternatively, you can also complete comment(s) on the website.

Page No./Paragraph No:

Your postcode:

Your comments:

Respond by **Mon 18 June 2018**

Are you generally:

☐

Supportive of the
Neighbourhood Plan

☐

Critical of the
Neighbourhood Plan

☐

Undecided

If you would like a response please provide your email address in the box below.

Your E-mail address:

Please hand this form in to either:

Potton Town Council, Potton Library,
Potton Post Office, or Cameron's newsagents.

Note - responses to the consultation will be published on the website and available from PTC Office

Potton Library

Reading Our stock includes new titles, bestsellers, favourite authors, large print books, and talking books on CD. We offer a request service which gives local access to all stock within Bedfordshire libraries.

Collect our 'Bear Reading Adventure' sticker storybook for the under 5s and add a sticker on each visit. Our Crime Readers Group meets the first Friday of the month 10-11am. A new crime title for the month is also selected. We are interested in forming a new library reading group - if you enjoy reading fiction and would like to take part, please speak to the library staff.

Children's Activities Term time activities include Storytime on Tuesdays 9.30-10am & a stay and play 'Books & Blocks' on Thursdays 9.30-11am. Lego club is every Friday 3.45-5pm, and our new K'nex club is Saturdays 1.45-3.30pm. Activities and crafts are available on Saturday afternoons, and during school holidays.

MISCHIEF MAKERS

SUMMER READING CHALLENGE 2018

The Reading Challenge, activities, crafts, and more is running throughout the Summer Holidays. A programme of what is on is available from Potton library.



Opening Times:

Mon	Closed
Tues	9am-1pm
Wed	2pm-6pm
Thurs	9am-1pm
Fri	9am-1pm and 2pm-6pm
Sat	9am-4pm

Tel: 0300 300 8063

www.centralbedfordshire.gov.uk/libraries



I.T. - We have computers, with facilities to print onto A4. Our WiFi is free to use - search for 'CBC_PUBLIC' within your settings. We offer IT help for beginners with a PC, laptop, or tablet - call in to book.

Working with the Community The library offers photocopying, book sale, & jigsaws to borrow or swap. We accept donations, however please speak to a member of staff beforehand.

The library has a team of volunteers who help in the library and with our story-times, crafts, and computer help. We recruit young volunteers to help with our summer reading challenge, and welcome those taking part in The D of E Awards.



Party On Potton - The Big Weekend

August Bank Holiday

Friday 24th – Monday 27th August 2018

Potton rocked over the August bank holiday of 2016 and the Henry Smith Playing Field was busier than Ken Dodd's accountants and the queue to get to see the yellow brick road was longer than Nagini (ask your children!).

Your 2018 committee left the comfort of the kitchen table a long time ago and totally submersed themselves in Dale Winton's Supermarket Sweep! We've been down and up every single aisle and picked only the best. There's no blue and white packaging here it's just pure Party On Potton gold. Every night is an absolute winner with the weekend starting off early

with a **Boogie Nights disco** from 6.30pm

(9pm curfew for younger ones). We're so lucky to have **Sound Express** back again for Saturday and Sunday's going to be the one with **three comedy acts** splitting your sides. There's only one ending to Party On Potton's 10th party and that's with those lovelies; those locals; those thoroughly amazing and wonderful **Potton Players**; you'd better start queuing!



Defibrillator at Potton Middle School

The Potton Federation has thanked Potton Colts for organising the funding for a defibrillator for the residents of Potton.

The defibrillator is situated at the front entrance to Potton Middle School (Mill Lane, Potton SG19 2PG) meaning that in an emergency, children and members of the wider community will have access to this lifesaving piece of equipment.

We would also like to thank Howdens Joinery who fitted the equipment.

Details can be found on the Potton Colts website at:

www.pottoncolts.co.uk/single-post/2018/03/09/Potton-Colts-defibrillator

This defibrillator is in addition to the one located outside of Potton Library, Market Square, Potton SG19 2NP.



Cathy Smart (Exec. Head of Potton Federation), Steve Judd (Chairman of Potton Colts Youth Football Club) and Garth Koby (Howdens)



George Howe, Chairman of Potton History Society and pupils from Potton Federation

Story in Stone

**Unveiling of The Potton Map
19th February 2018**

The final phase of Story in Stone's mosaic heritage trail through Potton, Sandy and Biggleswade began outside the entrance to Potton library in the market square on Monday 19th February at 2pm and not to be deterred by the rain the library came to our aid and served tea and coffee throughout the event. Chairman of the Potton History Society, George Howe introduced The Potton Map and explained his idea behind having such an image in the town, telling us something of the significance of various aspects as well as who was involved in making the large mosaic which is 2m x 2m, designed by artist Oliver Budd. The top left-hand section was made by students from The Potton Federation. All roundels and diamond shapes were made by Oliver Budd and the rest of the sections were made in mosaic workshops by some enthusiastic employees from Kier Living and members of the local community of Potton, during the summer workshops in July and August 2017.

The chairman of the Potton History Society then went on to introduce The Rt. Hon. Alistair Burt MP who gave a speech and



Oliver Budd & The Rt. Hon. Alistair Burt MP

together with students from the Potton Federation, unveiled the mosaic.

Story in Stone's ethos is about gathering communities together, engaging with people of all ages, abilities and disabilities. Because the project is set in three market towns, which are local to each other, it offers opportunities to interconnect. What we have in Potton now is a starting point for future events: half marathons, town walks, cycling tours, history trails, places to visit in Bedfordshire or a reason to visit Bedfordshire.



Potton Community Agent News

Supporting the over 60s in Potton

Tel: Andrea on 0300 555 5949 mobile: 07590 359 630 (working, Weds, Thurs only)



Charity Fundraiser - A group of local ladies organised a lovely Easter activity for the Friendship Group and raised £149.70 for the British Heart Foundation in the process. People enjoyed painting decorative plates and mugs which were then filled with Easter eggs and finished with a ribbon. Many thanks to Jane Leonard and her team for organising this.



Potton Friendship Group - meets every Thursday morning 10am -12pm at the Community Centre, Brook End. Have a game of crib, Triominoes, carpet bowls, Scrabble or cards or simply sit and chat over tea/coffee and homemade cake and quiche. A warm welcome awaits you. £2.50 entry.

Power of Attorney - if you took out a Power of Attorney between 1 April 2013 and 31 March 2017 then you were overcharged and are entitled to claim a refund. Refunds vary between £34 and £54 per Power of Attorney, depending when you took it out. Contact Andrea for further info.

Tablet workshop - Andrea and John and a group of experienced tablet users meet every Wednesday between 10 and 12 at the Community Centre, Brook Lane. If you have recently brought a tablet and need some support, just drop in. Tea/coffee and biscuits served.

Help with form filling - Don't forget, if you have any forms that you need help filling in such as Attendance Allowance, Blue Badges or Council Tax Reduction/ Housing Benefit or any other issue, then please call Andrea, Potton Community Agent, in confidence on **0300 555 5949**.

I am funded by Potton Consolidated Charity with a generous contribution from Potton Town Council.



Tall Trees Community Art: **Part 2**



A lot of Art has happened in Potton over the last few months, with the second presentation of the Story in Stone series appearing on the library in the Market Square. It's fantastic to see these pockets of art appearing!

The work I have carried out with the Potton Middle School has brought some equally great works to this mix. The art teacher, Sally Topple, and I set the task of adapting a font style. As you can see we were not disappointed with the results.



The letter 'H' is a great example of what we wanted to achieve.

I have received some stories from the ladies of the Phoenix Barbershop and I have been approached by a number of people who are wanting to me to interview them. This will not be a grilling as I'm no Michael Parkinson, but I feel the results will be brilliant. We still want more, so please don't forget, if any of you have a tale to tell you can email it to me at paul@paulpibworth.co.uk.

Feel free to look at my website www.paulpibworth.co.uk and you can like and follow my Facebook page [@PaulPibworthArtistSculptorJourneyman](https://www.facebook.com/PaulPibworthArtistSculptorJourneyman).

Our next stage is to start to make the frameworks for the sculptures. I'm very excited and I hope you enjoy seeing my work develop. I look forward to hearing from you all soon!

Potton Youth Club



Potton Youth Club has state of the art Apple iMac computer with a variety of programs installed for the young people to enjoy. At Potton, young people can get involved in writing and recording music and eventually advancing to editing visuals for the songs. At the club we have trained youth workers with experience in music and video editing who are currently on the hunt for the next big star from Potton. If you know a young person who would like to get involved in a music production or video editing project then Potton Youth Club is the place for them.

We also have regular cooking projects, art projects, pool table, and games consoles for young people to use.

Potton Youth Club is run by community charity Groundwork Luton & Bedfordshire. The youth club is open to **people aged 12-18 from 5pm-7pm on Thursdays at Potton Pavilion on Mill Lane** where Groundwork's youth workers have a whole host of fun activities to get involved in every week.



Do you know someone who might be interested? Please share this article with them and ask them to get in touch with

Kira Bernard, Lead Youth Worker on **07736132292**

or **Kira.Bernard@groundwork.org.uk**.

Volunteers Wanted

The Royal British Legion is currently recruiting for volunteer caseworkers across Bedfordshire.

You'll play a vital role in enabling the Legion to deliver our Welfare services and are often the only person to meet beneficiaries face to face.

The role involves visiting Service personnel, reservists, veterans and their families in their home, and completing our application for assistance.

Full training is provided, and expenses are covered. All volunteer caseworkers are DBS checked.

We are looking to recruit people with good social skills, who are able to drive and who are comfortable using a computer.

If you are interested or would like more information, please contact

0333 011 4480 or

VolCoordSEM@britishlegion.org.uk

