



POTTON
TOWN COUNCIL

News

Winter Edition 2018

www.pottontowncouncil.co.uk

Your meeting. Your town.



Annual Town Meeting - Tuesday 27th March 7pm

The Annual Town Meeting will be held by Potton Town Council on **Tuesday 27th March at 7pm** in The Mill Lane Pavilion. It is a chance for residents to talk to their town council about issues of concern in Potton.

Chairman, Cllr Angus Macdonald, will speak about what has been achieved in the year, what is planned for the future and answer questions.

Potton's two Central Bedfordshire Council ward councillors (Cllr Gurney and Zerny) and representatives from Potton

Federation, Potton Neighbourhood Plan and Potton Hall for All have been invited to speak.

Members of the public may address the meeting and raise any issues they feel should be considered for the future. So come along, meet the people who represent your views and tell them how well you think they are doing and what you feel should be their next priority.

This is **your meeting** about **your town**. Please join us.



Hello and welcome to the Winter edition of the Town Council quarterly newsletter!



The festive season has come and gone, and I hope you found it enjoyable, relaxing and full of good cheer. We switched on our Christmas lights on Friday 1st

December with the

town square packed as usual. It was great to see so many of you down there and supporting this event. Yet again, and in my own humble opinion, our Christmas lights were the envy of those for miles around. They looked wonderful and provided a spectacular backdrop to the town square during December and the New Year. I would like to take this opportunity to say thanks to our volunteers who come out throughout November and in early January each year to help put up and take down the lights for us. We really couldn't do it without them. I would also like to recognise and thank Deepdale

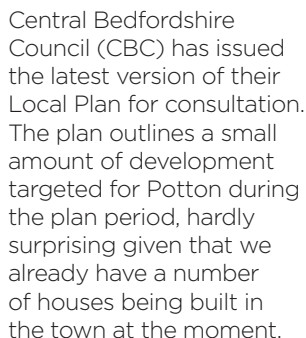


Christmas Lights

Trees again for our wonderful Christmas tree. It is returned to the square each year and shines beautifully during the festive season. However, before I leave the subject of all things Christmas we did receive a couple of queries. Some of the younger members of our community asked if Santa Claus really is magic and can deliver presents all over the world in one night, why does it take him two or three attempts to turn our Christmas lights on?



The Town Council has written to Bedfordshire Police and the Police Crime Commissioner asking what action can be taken to combat this and other incidents in the recent past. We have proposed that Bedfordshire Police join us each month during our regular Councillor Surgery, held on Saturday mornings in the library throughout the year. Our local PCSO has arranged for a member of the force to join the councillors at the February surgery, subject to availability, to provide the town with a point of contact, ensuring the public can share issues or useful information with officers. Our next surgery dates can be found on page 15 and I would encourage anyone wishing to speak to the police to attend and get their point across.



A circular diagram with a central black speech bubble containing the text "Local Plan...". Surrounding the bubble is a dashed circular line with various icons representing different aspects of a community. The icons are color-coded and include: a wind turbine, a house, a car, a bicycle, a bus, a train, a school, a hospital, a park, a shopping center, a factory, a power plant, a wind turbine, a house, a car, a bicycle, a bus, a train, a school, a hospital, a park, a shopping center, a factory, a power plant.

It promises to be a busy year in Potton...



Litter Pick

- Coming up in March we will undertake a further litter pick to tidy up our town. Details can be found on page 9.
- We will also be extending our car park at Henry Smith Playing Fields.
- This year, being an even year, also sees the return of Party on Potton's Big Weekend. For anyone new to the town this event is simply unmissable. The team are promising it will be bigger and better than ever so please provide your support and see page 10 for more details.
- We will also be marking the Centenary of the end of World War One. The town will join with a host of others across the UK in marking "The Battle's Over - A Nations Tribute" on the 11 November.



I would like to remind you that it's budget time again. You may have seen correspondence from CBC, Bedfordshire Police and the local Fire Authority on their proposals for the council tax budget in financial year 2018-19. Potton Town Council has also been deliberating over our budget required for 2018-19 to provide services in and around the town and fund some of our larger capital projects.

This year our budget will increase by £1.38 per month for Band D properties. This increase will help us recover costs from legal fees incurred earlier in 2017 fighting a judicial review into housing development in Potton. It will also fund our weekly Youth Club at Mill Lane, an undertaking that has been supported by Potton Consolidated Charity up until September 2017 and for which we are grateful. We have also taken the decision to ensure that council staff are paid the living wage for the work that they do, a decision that is being made by many companies across the UK reflecting the real cost of living at the moment. We are also increasing our staff to account for the increasing size of our town in the near future.

The decision to increase our precept was not arrived at lightly and prompted a great deal of debate. However, it has become increasingly difficult to provide services and to have to take on additional services from CBC over the previous few years whilst not seeing other Central Government funding passed onto town and parish councils by CBC. For further details on our budget and how we compare to our nearest local towns see page 5.

Finally, thank you for the feedback on our recently published Town Guide. All feedback has been gratefully received and we have taken on board some suggestions for our next publication. An electronic version of the guide can be found on our website and for any organisations whose details might change, please contact the Town Council so that the electronic version is kept up to date.



Enjoy the newsletter! Best Wishes

Angus

Cllr Angus Macdonald

Potton Council Tax

As well as providing a democratic voice for the residents of Potton, Potton Town Council manages and delivers various quality of life services in the town. The town council took the decision to increase the average band D tax payer by £16.57 from last year (approximately £1.38 extra per month), equivalent to 16%. The 2018/19 council tax charge made by Potton Town Council for an average band D property will be £120.14 per year and this will equate to approximately £10.01 per month.



What do the council tax payers in Biggleswade, Gamlingay, Sandy pay?

	2017/18 Band D	2018/19 Band D
Biggleswade	£128.08	
Gamlingay	£135.38	
Sandy	£135.96	
Potton	£103.57	£120.14

In the next newsletter edition, The Town Council will report the council tax for Biggleswade, Gamlingay and Sandy.

For further Town Council Services information visit
www.pottontowncouncil.co.uk

For Council Tax enquiries call
Central Bedfordshire Council on
0300 300 8000

MAY DAY FETE

Monday 7th May
11am to 3pm

At The Hutchinson Hollow, Biggleswade Road, Potton



Registered Charity no. 1158751

- Fun Fair
- Archery
- Craft Stalls
- Car Boot Sale
- Cricket Fun
- Live Music
- Bar & Food





Cllr Adam Zerny's report.

Central Beds releases final Local Plan for housing - Consultation now open

Central Bedfordshire Council (CBC) last month released the final version of its controversial housing development plan. It's still vital you respond to the consultation even if you have commented before. It runs until 22nd February.

In August, CBC carried out a public consultation on its draft Local Plan for housing. This plan will decide how many houses are built in the next 20 years and where they are built. The Council has acknowledged the plan could see a **40%** increase in the amount of greenspace turned into developed land.

The draft Plan included massive new developments in Biggleswade, Sandy and Tempsford and a report suggesting Sandy station would be shut and moved to a new site near a New Tempsford, midway between Everton and Tempsford.

The public response was almost unanimously negative to the new developments with a 'disapproval rating' of up to **98%**.

It seems CBC has listened to some of these negative comments and the final version of the plan, known as the Pre-Submission, has a reduced number of headline developments including:

- A huge new eastern extension to Biggleswade of 1,500 houses. In addition there will be a further 400 houses north of Biggleswade.
- Big developments near Marston Moretaine and Arlesey.

And a number of smaller developments including:

- 12 houses on Sandy Road, Potton (in addition to 389 already approved)

- 37 houses in Dunton
- 37 houses in Sutton
- 23 houses in Everton

Read more on these smaller developments here:

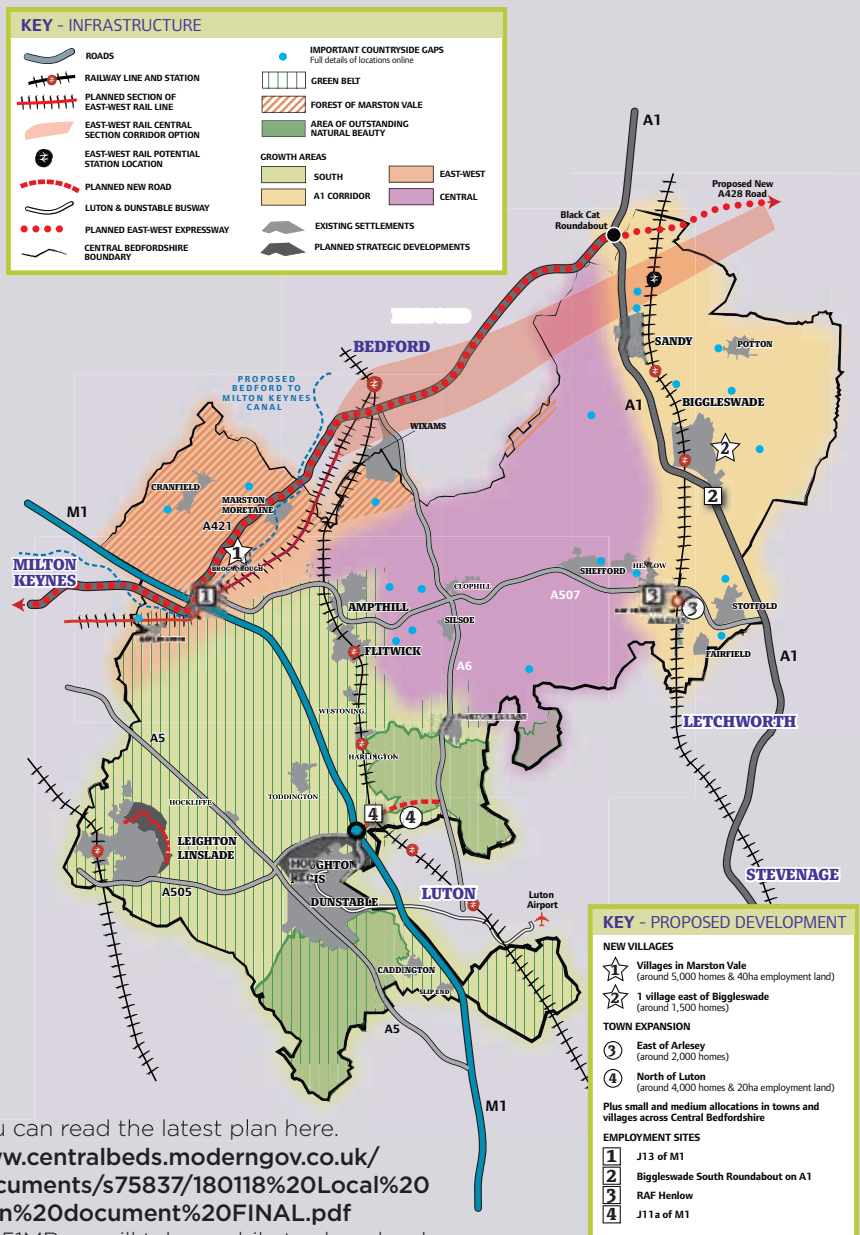
www.centralbedfordshire.gov.uk/planning/policy/local-plan/growth-towns-villages.aspx

So on the surface of it, the size of development east of Biggleswade is reduced and the Sandy, Tempsford and Aspley developments appear to have vanished. It's probably not worth celebrating just yet though as the full report shows the huge developments planned at Tempsford, Sandy and east of Biggleswade are being kept in reserve and the Plan may be reviewed just six months after adoption.

The public consultation is now open and runs until 22nd February. You can take part by going to **www.centralbedfordshire.gov.uk/localplan**

After the consultation, CBC is obliged to pass the Local Plan to an independent Government planning inspector. He will review the comments made by the public and will be checking CBC's sums.

Remember, your comments from the August draft plan will NOT be passed to the inspector so please take part in this final consultation.



You can read the latest plan here.
www.centralbeds.moderngov.co.uk/documents/s75837/180118%20Local%20Plan%20document%20FINAL.pdf
 It's 51MB so will take a while to download.

You can see an abbreviated version here: www.centralbedfordshire.gov.uk/planning/policy/local-plan/pre-submission.aspx

For more background and to see a full list of FAQs, see the latest articles on my facebook page www.facebook.com/adamzerny.



Story in Stone

By Carolyn Blake

With Phase 1 under our belt in the Market Square, the mosaic roundel of The Four Manors looks impressive and majestic as you drive in from Gamlingay. Look closely and you will see snippets of your social history. The historical information for this was collected by the Potton History Society under the careful guidance of George Howe, who has also been giving regular updates on BigglesFM.

The project Story in Stone, sponsored by Central Bedfordshire Council is part of the Market Town Regeneration Scheme.

The final mosaic to be installed in Potton's Market Square is a giant 2m square map. This will be placed on the opposite side of the library. This mosaic celebrates various aspects of the town's history with significant images placed around the map, which also includes a YOU ARE HERE sign. As with the last mosaic, a large section of this mosaic has been made by students



from The Potton Federation under the guidance of their art teacher Mrs Sally Topple. Other sections have been made in summer workshops at the Community Centre by the local community and 17 members of Kier.

This mosaic will be unveiled on **Monday 19th February at 2pm**. Everybody is very welcome to attend this event.



HEROES ASSEMBLE

IT'S TIME TO CLEAN UP THIS COUNTRY!

Saturday 10th MARCH 2018



The Spring Litter Pick is Back

From 10am – 2pm

The Community Centre,
Brook End,
Potton SG19 2QS



Party On Potton The Big Weekend

AUGUST BANK HOLIDAY

Friday 24th – Monday 27th August 2018



From around the kitchen table POP are pleased to announce the themed days for 2018.

Following on from the success of our themed days for 2016 the committee have decided to keep the same structure for 2018. **Saturday**, will be our **Community Day**, with all our local groups showcasing who they are and what they do. **Sunday** will be **Arts and Crafts** when you can browse the numerous stalls from local trades people and Monday will again be our Sports Day.

If you run a local group, are a local craft person or are part of a sports team and would like a stall to showcase what you do then please get in contact via the website www.partyonpotton.org.uk. Stalls are free on Saturday and Monday and just £10 on Sunday.

We are also starting to compile our volunteers list without whom the weekend cannot happen, so please let us know when you can offer a few hours help. We will of course be at the Four Seasons Market where you can also sign up.

As a sign off I congratulate you for making it through the most miserable month of the year, January, (in my humble opinion), and leave you lovely Potton people with the knowledge that the donkeys will be back! Roll on spring, roll on volunteers, but slow down August we've a lot to do before then...



Carnival



High Ropes



Donkey Rides



Scarecrow Hunt



Off Road Bike Ride



Punch and Judy



The Potton Hall for All Support Committee

The Potton Hall for All Charity are delighted to announce that the Community Building Project was granted full Planning Permission on 23rd November 2017. This is a huge step and we can look forward with increasing confidence to cutting the first sod and laying the first bricks of this exceptional community resource.

Great news as this is however, that could be the easy bit!! The Trustees and Committee have worked tirelessly to reach this stage, but much work still needs to be done and funds still need to be generated and we will need more help from you, your friends and local businesses.

We are always looking for enthusiastic individuals to help plan, organise and run the various activities we support as a group. Other volunteers with professional experience are also sought, including those with grant and trust fundraising and marketing/communication backgrounds. We are naturally always grateful to receive direct financial support, but what we want most of all, please, is your time, energy and ideas – so if you feel able to give any of these please e-mail

hall4allpotton@btinternet.com.

As for recent financial support, we are delighted that we have been selected by the Co-op as part of their Local Causes Scheme for 2017 – 2018. Your help is a click away on **www.membership.coop.co.uk/causes/14886/**.



It is really easy and doesn't cost you a penny! They still have shops in Gamlingay, Sandy, Biggleswade and online.

The PHfA team attended the Christmas Lights Switch On and the Christmas Seasonal Market and look forward to continued closer working with all local groups and organisations. We are pleased that the combined Town Council / Hall for All working group to secure CBC Executive's agreement to the land transfer and release of S106 monies has got off to such a positive start.

Meanwhile we will keep you informed of all our activities, through our website **www.pottonhallforall.co.uk** and Facebook **www.facebook.com/pottonhallforall**.

Please remember The Hall for All is exactly what it says on the tin and will provide a variety of excellent facilities for our delightful town. It will belong to everybody and will be an asset for everyone.

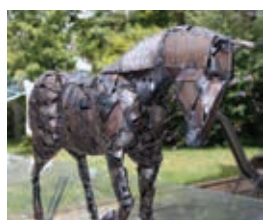
Registered Charity - Potton Hall For All 1158751

Tall Trees Community Art

By Paul Pibworth

In 2017, I was commissioned by Kier Living to create a number of sculptures to be placed within the Tall Trees estate on Biggleswade Road, Potton.

My proposal comprised of some pavement treatments, text branded into wooden fence work, a one metre diameter apple and a full-scale shire horse.



People who know my work will maybe get the notion that I work with text and throw it into the mix of stainless steel wording and concrete. Instead of using flint as an aggregate in the concrete mix, I am going to be using marble and Portland Stone, both of which are soft and can be beautifully honed and polished. The treatment on the pavement and the text branded onto the public fences are going to be text, which is going to be a precursor, guide and way marker to the Apple and the Shire Horse sculptures. Shire horses have been the beast of burden in the fields in and around Potton for centuries. While the Apple is a treat for the horse, for sure it was grown around Potton in abundance in the last century in the Cox's Orange Pippin Orchards, the largest orchard in Europe.

The text is to come from the people of Potton both old and new, their lives, past, present and future thoughts and aspirations. I will be going into most, if not all, of the groups, organisations and schools of Potton to listen to their stories.

Dates for the Diary

February

Mon 19 th	Story in Stone mosaic (see page 8 for information)	2pm
----------------------	--	-----

March

Sat 10 th	Litter Pick (see page 9 for information)	10am – 2pm
Sat 17 th	Four Seasons Market (see page 16 for information)	9am – 1pm
Tue 27 th	Annual Town Meeting (see page 1 for informaton)	from 7pm

May

Mon 7 th	May Day Fete (see page 5 for information)	11am – 3pm
Tue 8 th	Freeman of Potton's Birthday Commemoration Ringing of St Mary's Church Bells	
Sat 12 th	Potton Show Plant Sale – Market Square	8.30am – 12noon

Potton Library



Opening Times:

Mon	CLOSED
Tues	9am-1pm
Wed	2pm-6pm
Thurs	9am-1pm
Fri	9am-1pm and 2pm-6pm
Sat	9am-4pm

Tel: 0300 300 8063

www.centralbedfordshire.gov.uk/libraries



The Library Online & APP -

Users can browse, request and renew. Free eBooks, audio books, newspapers and magazines are available. Comic plus offers graphic novels for children, with provision to select the desired age. Access is free for Britannica Library (an online encyclopaedia), with junior, student and adult levels of information and Theory Test pro, for those learning to drive.



Reading - Our stock includes new titles, bestsellers, favourite authors, large print books, and talking books on CD. We offer a request service which gives local access to all stock within Bedfordshire libraries.



Collect our 'Bear Reading Adventure' sticker storybook for the under 5s and add a sticker on each visit.

Our Crime Readers Group meets the first Friday of the month 10-11am. A new crime title for the month is also selected.

We are interested in forming a new library reading group - if you enjoy reading fiction and would like to take part, please speak to the library staff.

Children's Activities -

Term time activities include Storytime on Tues 9.30-10.00 and a stay and play 'Books & Blocks' on Thursdays 9.30-11. Lego club is every Friday 3.45-5, and our new K'nex club is Saturdays 1.45-3.30. Activities and crafts are available on Saturday afternoons and during school holidays.



Working with the Community - The library offers photocopying, book sale and jigsaws to borrow or swap. We accept book and jigsaw donations, however, please speak to a member of staff beforehand.

The library has a team of volunteers who help in the library and with our storytimes, crafts and computer help.

Potton Community Agent News

Supporting the over 60s in Potton

Tel: Andrea on 0300 555 5949 mobile: 07590 359 630 (working, Weds, Thurs only)



In December, Potton Friendship Group volunteers organised a fantastic Christmas party attended by over 45 people from the community. Everyone enjoyed a buffet lunch, quiz, pianist and a raffle. Further trips and events are planned for throughout the year including a John Bunyan river boat trip and a Royal Wedding 'street party'. Come along to the Friendship Group to find out more.

If you'd like to meet new friends, then why not come along to the **Potton Friendship Group** - we gather every Thursday morning 10am - 12pm at the Community Centre, Brook End. Play Triominoes (very popular!) - carpet bowls, Scrabble or cards or simply sit and chat over tea/coffee and homemade cake and quiche. A warm welcome awaits you. £2.50 entry.

Did you get given a tablet device for Christmas? Not sure how to get the most out of it? Then pop down to the Community Centre on a Wednesday morning 10am - 12pm. Andrea and John and a group of experienced tablet users are there to help you get to grips with it. Tea/coffee and biscuits served.

Don't forget, if you have any forms that you need help filling in such as Attendance Allowance, Blue Badges or Council Tax Reduction/Housing Benefit or any other issue, then please call Andrea, Potton Community Agent, in confidence on **0300 555 5949**.

Please note working days are Wednesday and Thursday. I am funded by Potton Consolidated Charity with a generous contribution from Potton Town Council.



Town Council Information and Office Opening Times

For enquiries regarding the following: Cemetery, Allotments, Henry Smith Playground, Mill Lane Playground, Recreation Fields, Public Conveniences, Brook End Car Park, Mill Lane Pavilion and Community Centre. The Town Council office is open for drop-in visitors as follows:

Monday	9.30am – 12.30pm
Tuesday	9.30am – 12.30pm
Wednesday	Closed
Thursday	9.30am – 12.30pm
Friday	9.30am – 12.30pm

If you want to be sure of seeing a specific member of the team please ring ahead to make an appointment

Tel: 01767 260086

E: pottoncouncil@btconnect.com

W: www.pottontowncouncil.co.uk

Councillor Contact details

Chairman Angus Macdonald	262006
Vice Chairman Denis Ellison	261925
Adrian Bell	260641
Geoff Emery	261710
Andrew Gibb	260067
Richard Harris	262596
John Hobbs	260710
Les Ivall	261559

Jonathan Lean	262404
Alan Leggatt	260001
John Lewis	260726
Jonathan Price Williams	07981 350359
Chris Temple	262535
Rex Whitfield	262246
Adam Zerny	261319

Town Council Meetings

Held in the Main Hall of the Community Centre starting at 7pm.

Tuesday 6th March

Tuesday 3rd April

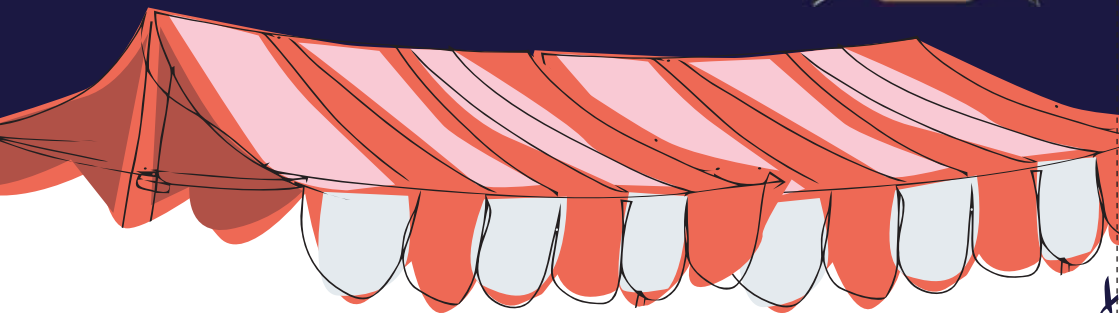
Tuesday 1st May

Councillor Surgeries

Held in the library starting at 10am until 12 noon.

Sat 17th February	Cllr Lean and Cllr Whitfield with Bedfordshire Police
Sat 17th March	Chairman Cllr Macdonald and Vice Chairman Cllr Ellison
Sat 14th April	Cllr Price Williams and Cllr Temple
Sat 12th May	Cllr Harris and Cllr Ivall

This publication has been compiled and published by Potton Town Council who are the owners of the copyright. No reproduction is permitted without the express permission of the Council. Every effort has been made to ensure the accuracy of the various entries within this publication. In no circumstances can Potton Town Council accept any liability for any loss or damage of any kind which may arise as a result from any error in, or omission of, any entry, artwork or telephone number. The editorial content is not necessarily the views of the Council.



Four Seasons Market

2018 Market Dates for your diary

17th March

15th September

16th June

8th December

The stalls are a mixture of old favourites and we also ring the changes with variety to suit everyone. Each market will include a good selection of the very best local produce, typically:

- local meat
- artisan bread
- beer
- cheese
- vegetables
- preserves

There is always a selection of crafts, plants and refreshments. Music is a regular feature and adds to the lively atmosphere.

The market takes place in the square in the centre of Potton, surrounded by indispensable small shops.



For more information
[www.pottontowncouncil.co.uk/
four-seasons-market/](http://www.pottontowncouncil.co.uk/four-seasons-market/)

**Keep
me!**